

TB0050 WB-5710400000 Valve Control Lift Axle Drop When Parking

27 Feb 2007	Author: Yuying Wan	Version 1	Cross Ref: Original Drawing files
-------------	--------------------	-----------	-----------------------------------

Description:

The part WB-5710400000 is a pressure control valve which is fitted in the Hendrickson brake system with lift axle at front. Its purpose is to enable automatic lowering of the lift axle when parking brake is on.

Normally for the Hendrickson air suspension with a lift axle, the lift axle will drop when the weight is over 13T. But in the French Islands and Spain (Air Rail) the regulation requires that all axles must ALSO be on the ground when parking, regardless of weight. The pressure control valve WB-5710400000 is fitted to achieve this purposes.

Models and Markets:

Typically for model SB2040304 Trombone sidelifers fitted with Hendrickson suspension with lift axle, mandatory for all French Island and Spain (Air Rail) units. eg SB7776.

Parts:

Parts for this unit are as follows;

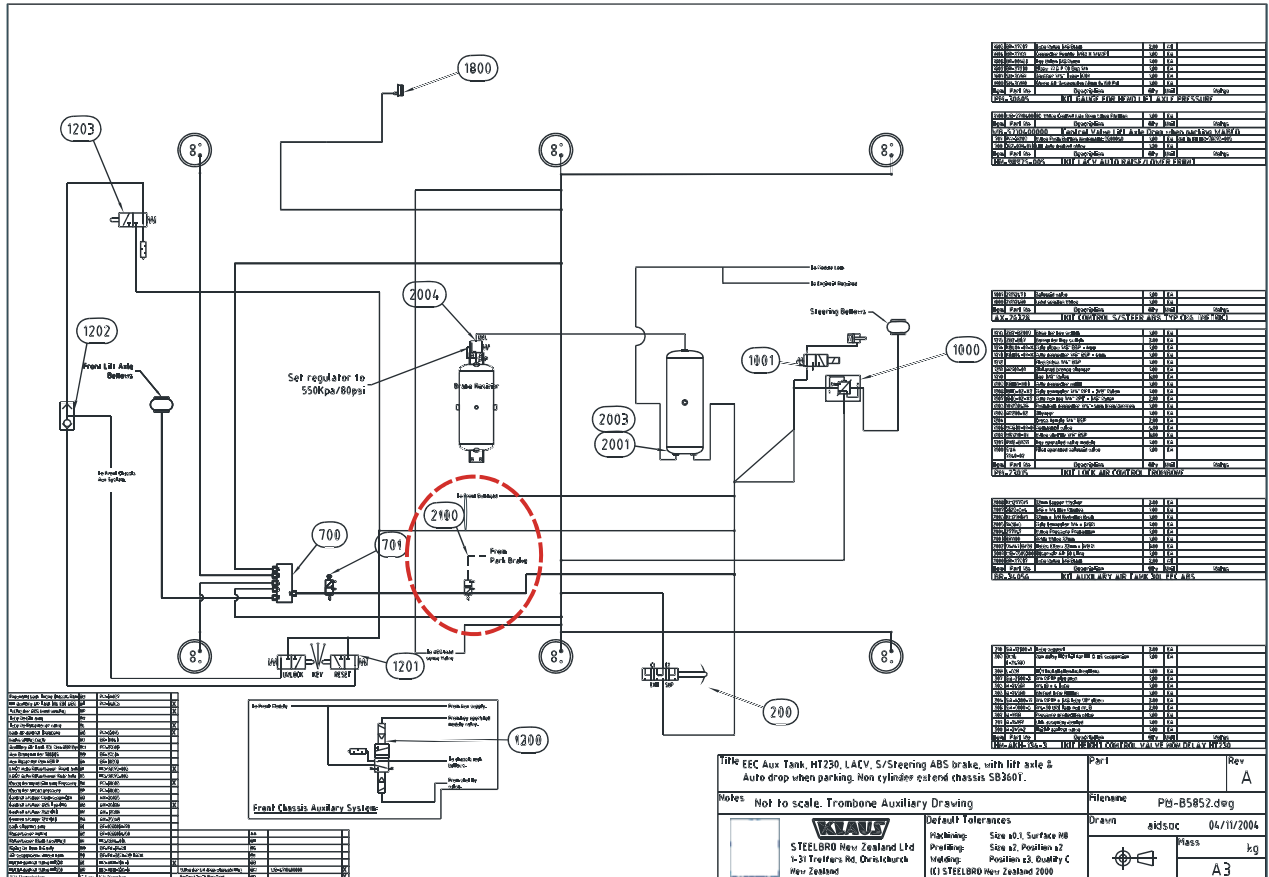
QTY	PART	Description
1	HN-98975-008	Kit LACV Auto Raise/Lower inc. Labels
1	PM-29594	# Pneumatic Lift Axle Hendrickson
1	PM-30605	* Gauge for Hend Lift Axle Pressure
1	TA-33822	* Box Lockable For Lift Axle Button HDKN
1	WB-5710400000	Valve Control LAX Drop When Parking

The parts above are in conjunction with Hendrickson suspension and lift axle kit.

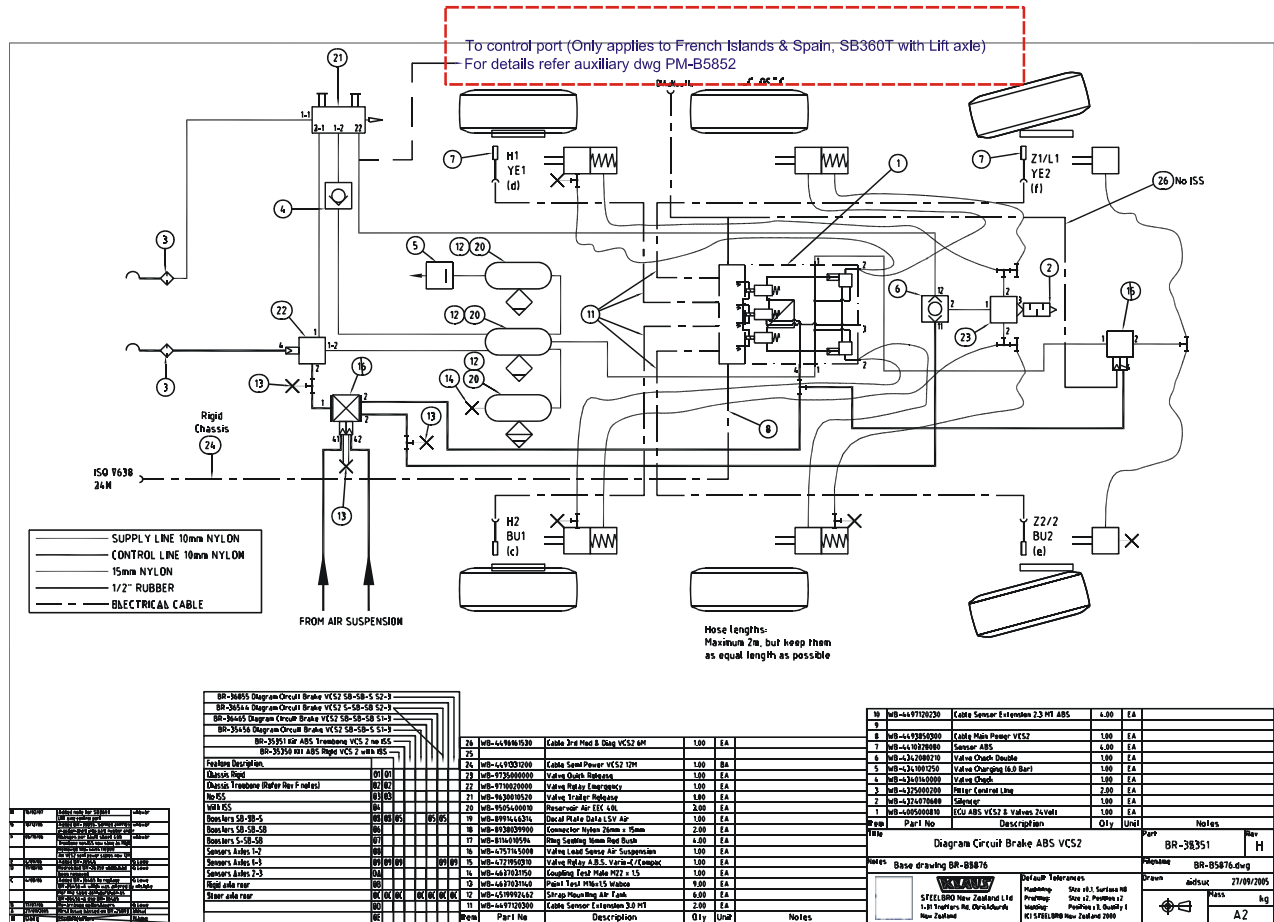
Fitting Instructions

We recommend referring to the full size drawing for details and using the drawings shown in this document as reference only.

1. Fit the valve WB-571 040 000 in the signal line of the Hendrickson lift axle control valve as circled in the auxiliary drawing below.



- Add Tee to the park brake circuit as highlighted in the brake drawing BR-B5876-BR-35351 below, connecting to the pilot port of control valve.



- Connect the assembly as shown in drawing.